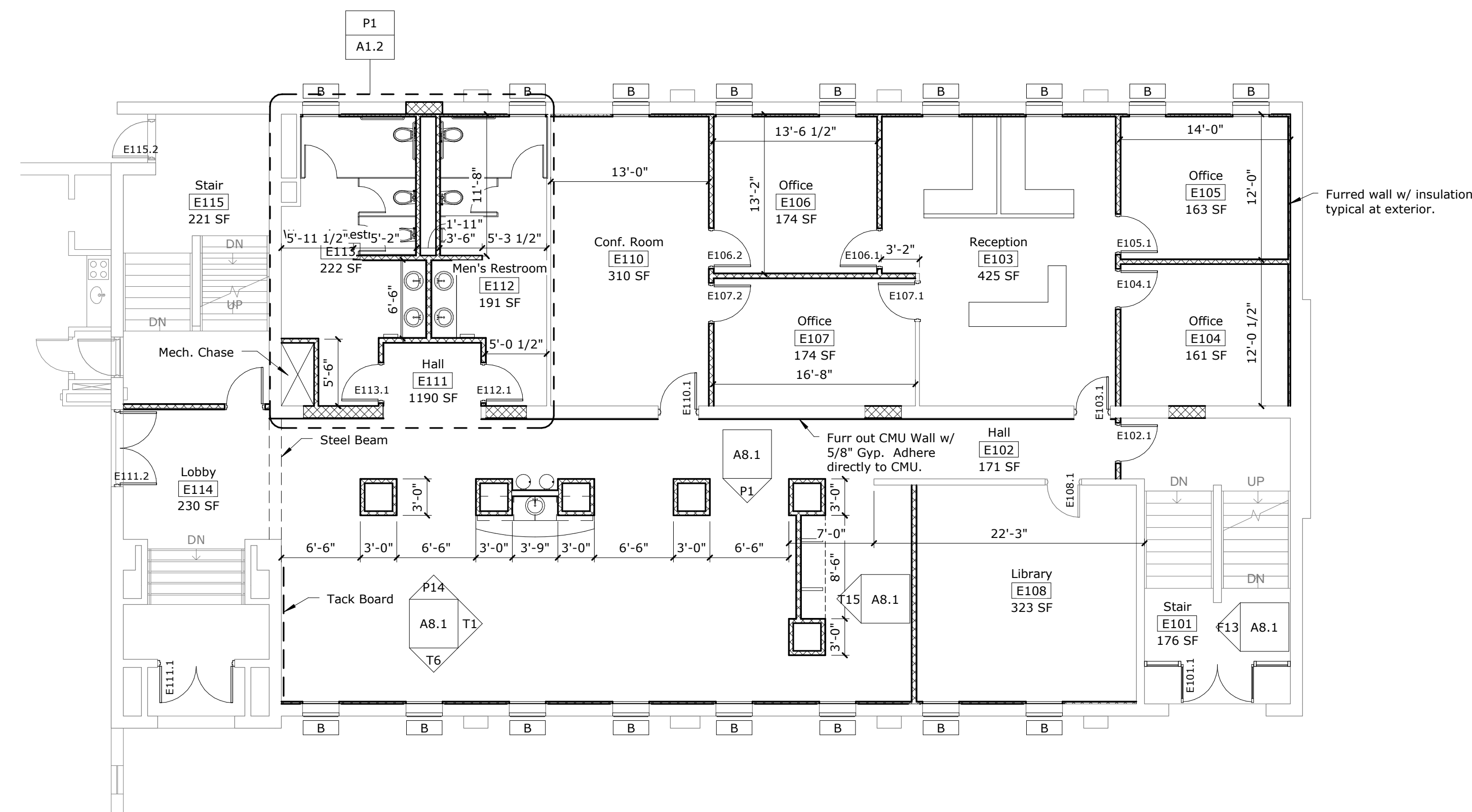




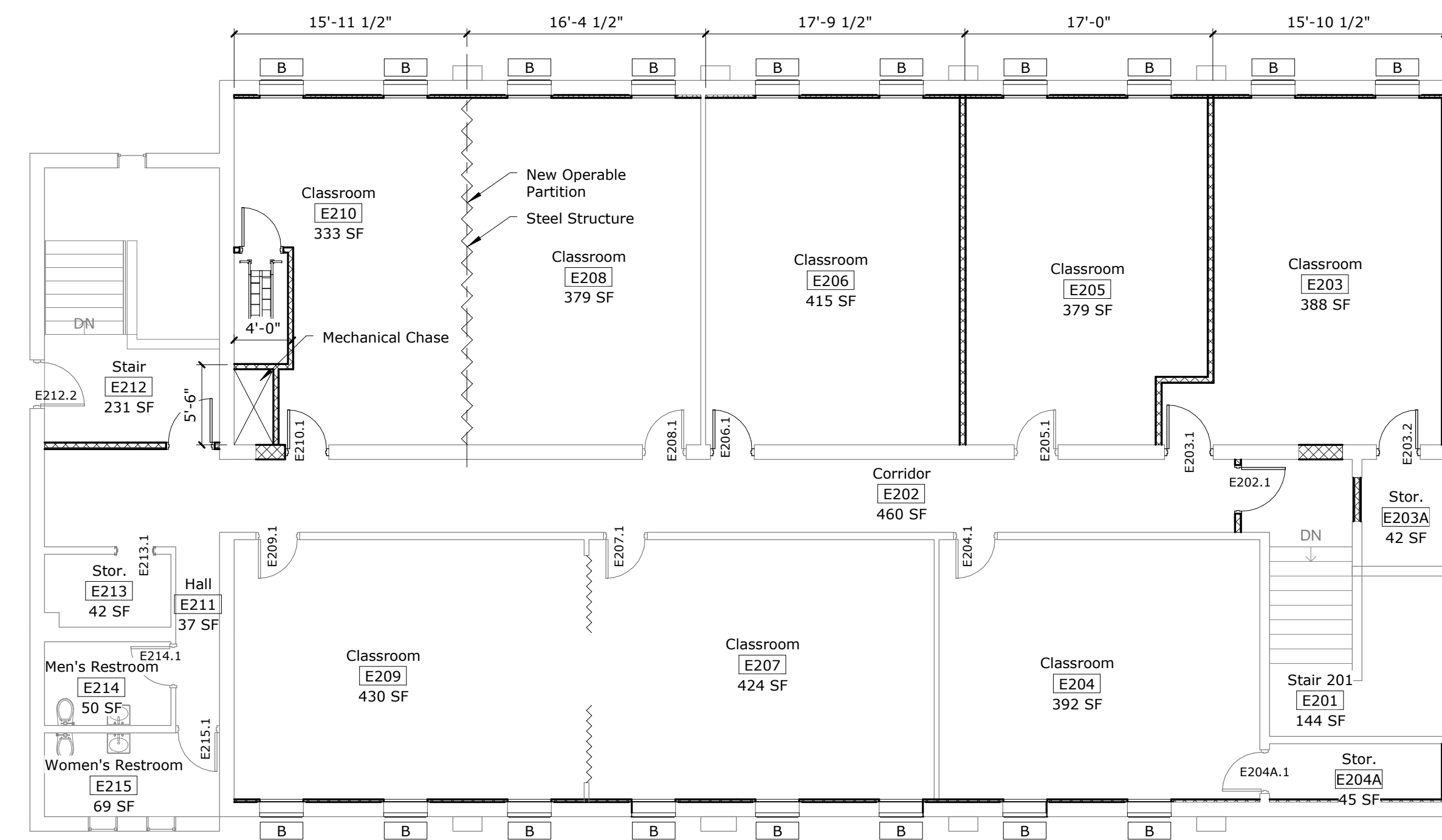
ARCHITECT
 BAHR VERMEER HAECKER ARCHITECTS
 440 N 8TH ST STE 100
 LINCOLN NE 68508
 V 402 475 4551
 F 402 475 0226
 bvh.com

MECHANICAL ELECTRICAL ENGINEER
 ENGINEERING TECHNOLOGIES INC.
 825 M STREET, SUITE 200
 LINCOLN NE 68508
 V 402 476 1273
 F 402 476 1274
 et-engineers.com

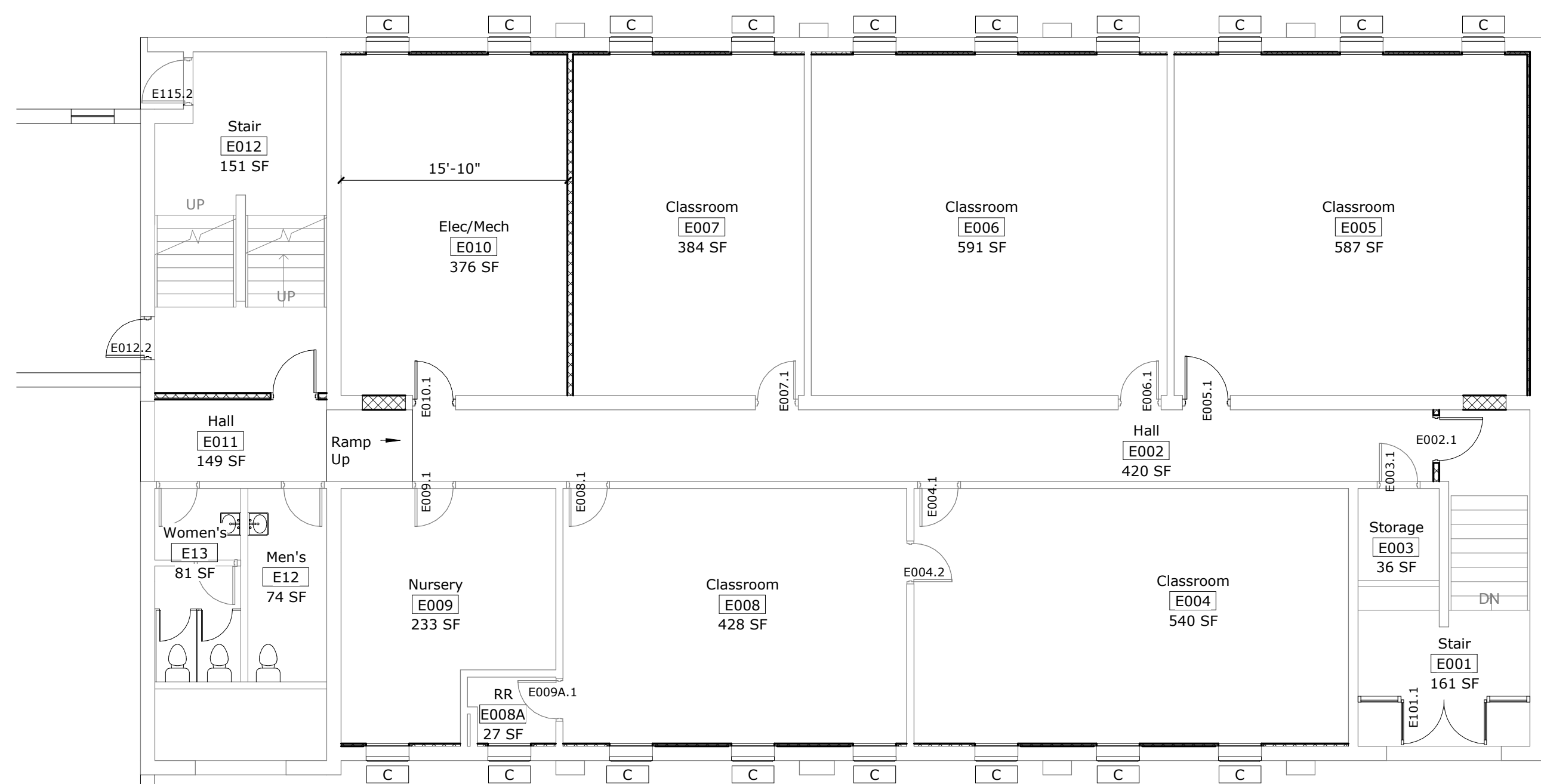
STRUCTURAL ENGINEER
 R.O. YOUKER
 1201 O Street, Suite 310
 Lincoln, NE 68508
 V 402 477 7940
 F 402 477 7631
 royouker.com



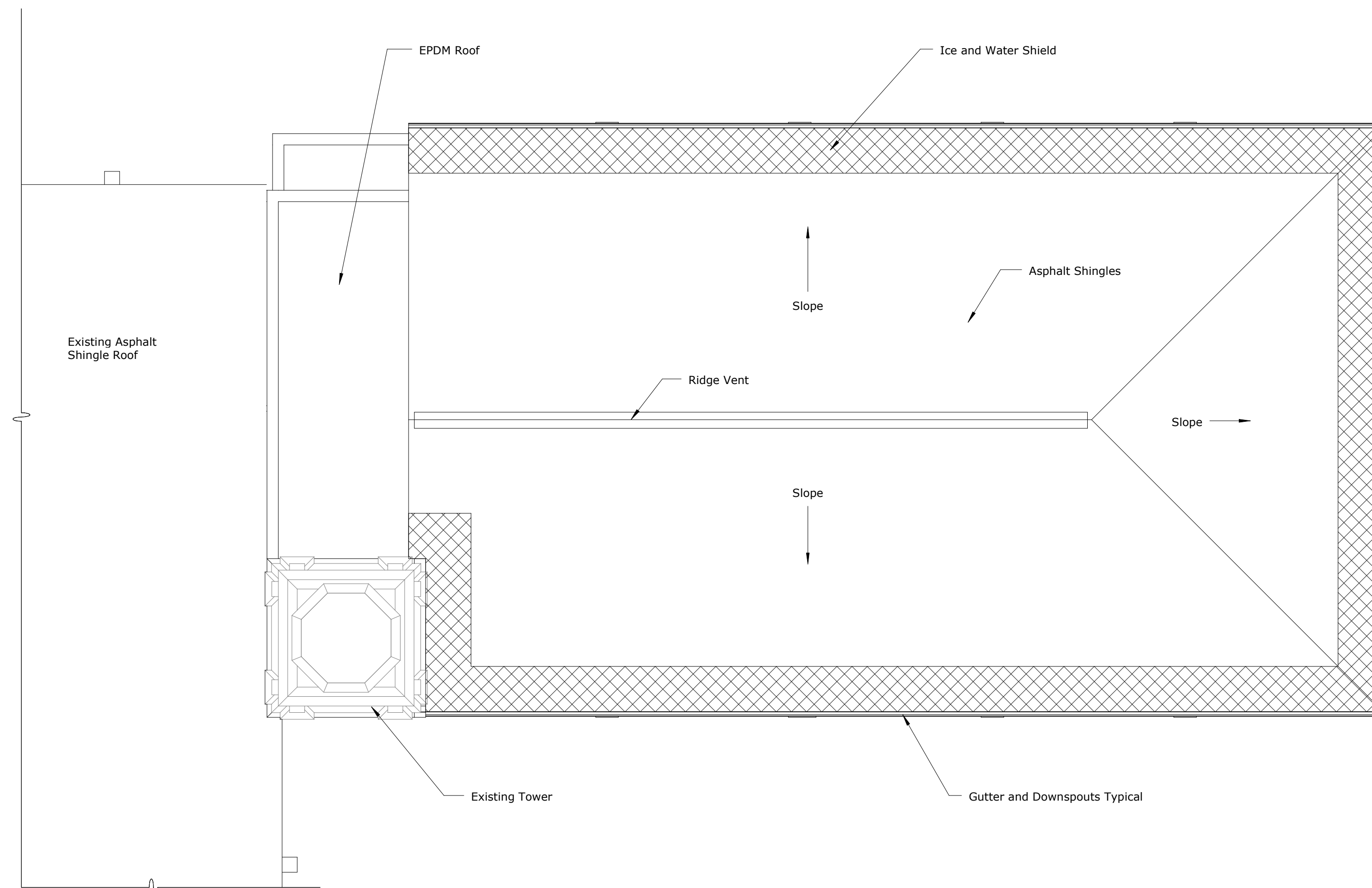
K1 First Floor Plan
 1/8" = 1'-0"



K14 Second Floor Plan
 1/8" = 1'-0"



A1 Basement Floor Plan
 1/8" = 1'-0"



A14 Roof Plan
 1/8" = 1'-0"



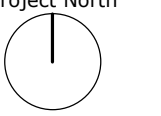
First United Methodist Church - Columbus, Renovations

PROJECT: L09064 DATE: 5 JUNE 2011
 © Copyright 2009 Bahr Vermeer Haecker Architects, LTD
 7/11/2011 10:41:49 AM
 C:\Users\pjohnson\Documents\Projects\09064 - Columbus Church\09064-johnson.rvt

PRELIMINARY
 NOT FOR
 CONSTRUCTION

Floor Plans

Project North



A1.1